



www.leinstertennis.ie

FEBRUARY



Attention Junior Players! Matchplay Event Easter 2008-Important Notice!

We have been informed that due to the Hennessy Gold Cup in Leopardstown Racing Course we will not be able to use Westwood Leopardstown tennis facilities on Sunday 10th February. Therefore we have had to change at short notice the arrangements for the Under 10 and Under 12 Qualifying Matchplays. The changes are detailed below. We apologize for any inconvenience this may cause.

QUALIFYING Matchplay 9th-13th February. Details for each age group below.

Dates

Leinster Spring Qualifying Matchplays

UNDER 10 BOYS **VENUE CHANGE!** U10 Girls go straight to Leinsters.

Venue: **National Training Centre**, Dublin City University.

Dates: Sunday 10th February

All children should be accompanied by a responsible adult who should stay for the full duration of the event.

UNDER 12 BOYS & GIRLS **DATES and VENUE CHANGE!**

Friday 8th February: Leopardstown Tennis Club, Leopardstown Grove (different from Westwood Leopardstown) matches will start from 2 pm.

Saturday 9th February Westwood Leopardstown .

UNDER 14 BOYS & GIRLS

Venue: Westwood Leopardstown

Dates: Mon 11th, Tues 12th and Wed 13th February

UNDER 16 BOYS & GIRLS

Venue: Brookfield LTC, Palmerston Park, Rathmines, Dublin 6

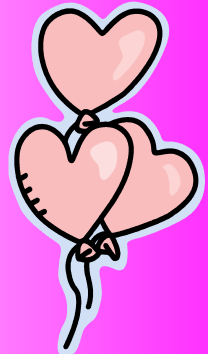
Dates: Mon 11th, Tues 12th and Wed 13th February

Leinster Spring Matchplays

Under 10s, Under 12s, Under 14s and Under 16s Friday 7th - Sunday 9th March 2008

National Spring Matchplays

Under 10s, Under 12s, Under 14s and Under 16s Friday 4th - Sunday 6th April 2008



School Leagues 2008

All information is on www.leinstertennis.ie so if you as a Club member/parent or teacher would like to enter get your application in now for this fun filled event!!!!

PLAY WITH VARIATION.... Peter Farrell – Development Officer.

One thing opponents hate is never knowing what is going to happen next. We all feel more comfortable if we can predict a players response to our shots. Yet many players make the mistake of being predictable, and thus making life easy for the opposition. Take for example **returning a weak second serve**. Most players most of the time will go for a winner in this situation, making some and missing some. But a clever server will anticipate what is going to happen and, as the match progresses, be more and more prepared for the attempted winner.

Instead, try varying how you deal with this weak serve. What options do you have?

‘Chip and Charge’ - see the short serve as an opportunity to make your return of serve an approach shot, and put the server under pressure to pass you.

Drop Shot – as the server is recovering after her serve, she may not be ready to sprint forward. It’s an easy shot for the receiver if the second serve has bounced short.

Winner – yes of course - if the opportunity is there and you are hitting the ball well, why not sometimes turn up the power? It will generally be easier to hit a winner crosscourt rather than down the line, since the ball can be angled more effectively away from the server when hitting crosscourt (see diagram – line 1 is longer than line 2).

HERE'S THE KEY:
the more your opponent is
thinking and worrying
about what you might do,
the less she is
concentrating on what she
intends to do

Leinster Branch AGM

All Welcome to attend this years Annual General Meeting of Leinster Tennis will take place at 8pm on Wednesday 27th February in Lansdowne LTC, Londonbridge, Dublin 4.



FOR DISPLAY IN YOUR CLUB

